

# [HANDOUT 10]

## The participation *spectrum*: how participatory is your work?

### INFORM

#### Noticeboards

The community receives information to help them understand who you are, the problem and the solutions.  
*This is not real participation.*

### INVOLVE

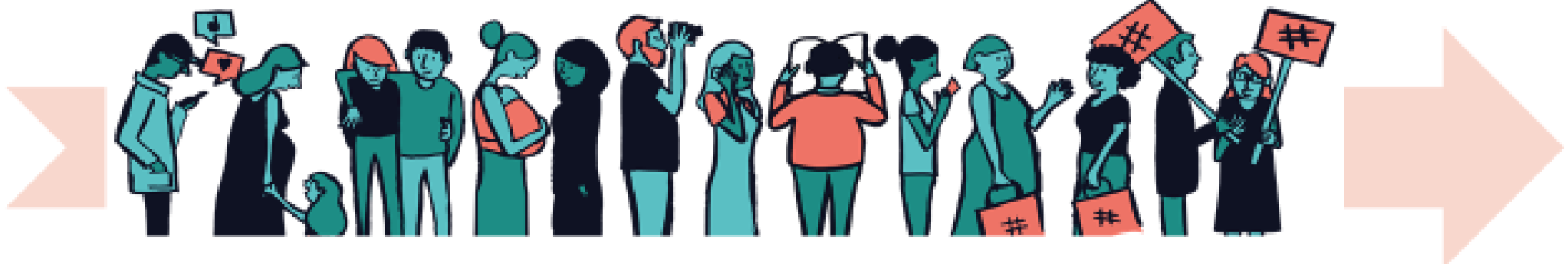
#### Regular community meetings

The community works directly with your organisation, provides input to key decisions and receives feedback.  
*You write the plans & make final decisions.*

### EMPOWER

#### Community Action Plan

The community has final decision-making power and implements their plans.  
*Your organisation supports it with funding, materials, technical support.*



### CONSULT

#### Assessment

The community is asked about their needs and priorities, provides feedback and is kept informed.  
*Lowest level of participation.*

### COLLABORATE

#### Project Committee

The community and your organisation enter into a partnership, planning and deciding things together.  
*You manage things together though final decisions still rest with you.*